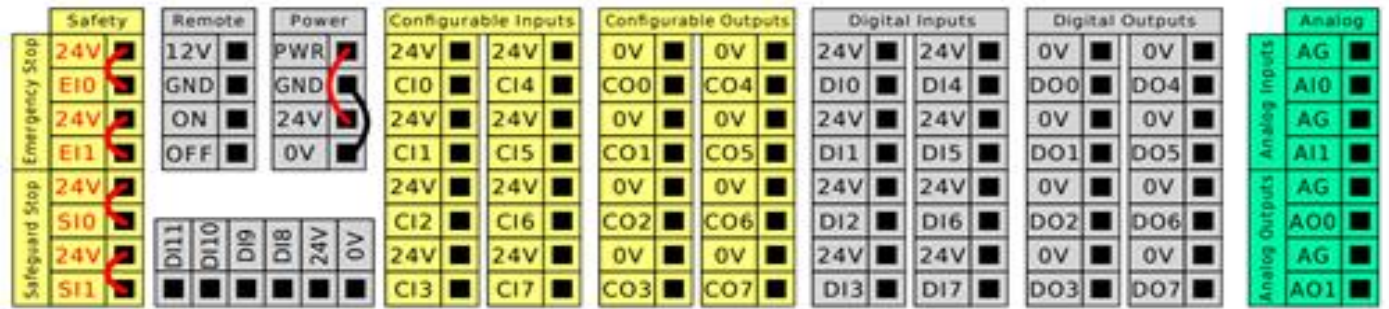


# CLAMPBOOSTER

## UR CAP Quickstart manual

**Step 1:** Connect your CLAMPBOOSTER to the control cabinet of your cobot.



### Analog:

- Grey/Pink = A01
- Purple = AG
- Red/Blue = A00
- Black = AG

### Digital Input:

- Brown = 24V
- Yellow = DI0

### Digital Output:

- White = 0V
- Green = DO0

## CLAMPBOOSTER circuit diagram

CLAMPBOOSTER connection			Roboter connection		Description
color	signal name	type	signal name	type	
Yellow	Ready Signal (+)	OUT	Digital In	IN	closed (ready), open (busy) potential free contact
Brown	Ready Signal (-)	OUT	Digital In	IN	
Green	Blow-off Air (+)	IN	Digital Out (24V DC)	OUT	24V - Blow-off Air (on), 0V Blow-off Air
White	Blow-off Air (-)	IN	Digital Out (COM)	OUT	
Red	Security Guard(+)	IN	Digital Out (24V DC/0,125mA)	OUT	24V - Motor Power (on), 0V - Motor power (off)*
Blue	Security Guard(-)	IN		OUT	
Grey	not documented				
Pink	not documented				
Red/Blue	Optional	IN	Torque +		Electricity 4-20 mA => 5-100 Nm
Black	Optional	IN	Torque -		
Grey/Pink	Optional	IN	opening angle +		Electricity 4-20 mA => 0-10 Revolution
Purple	Optional	IN	opening angle -		

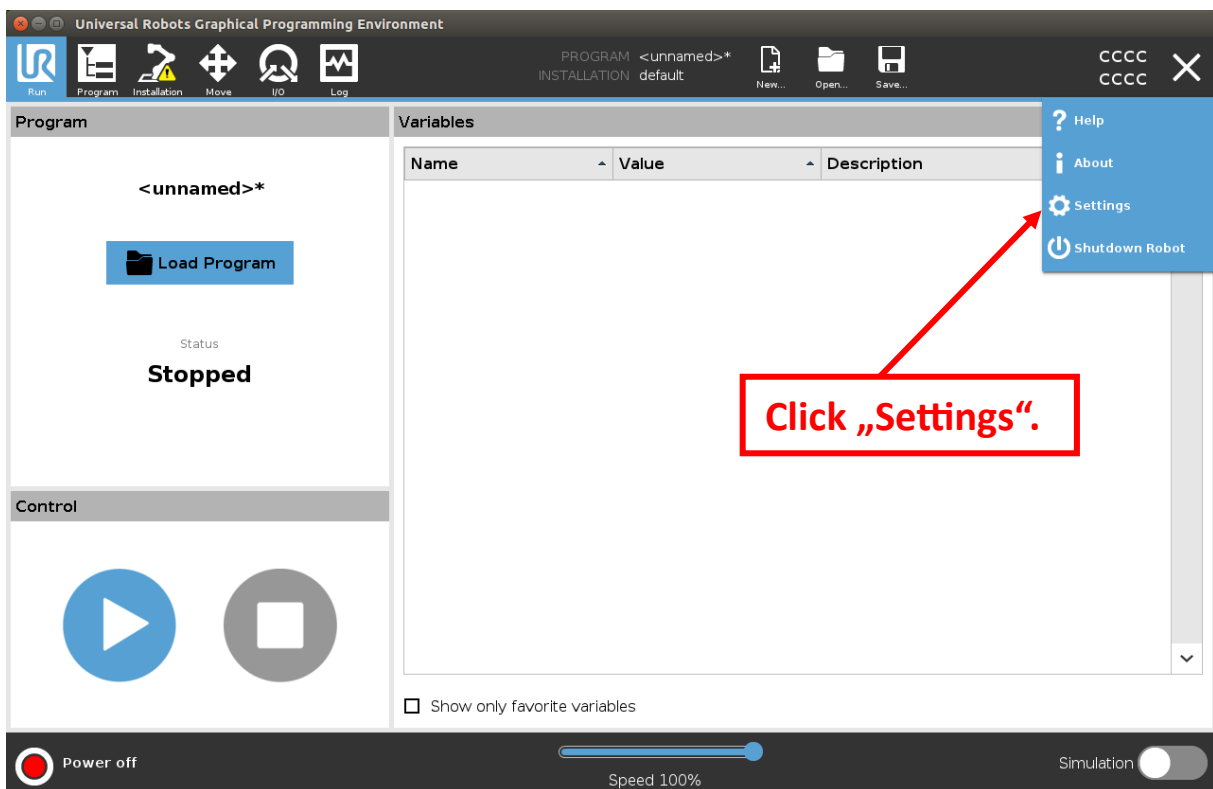
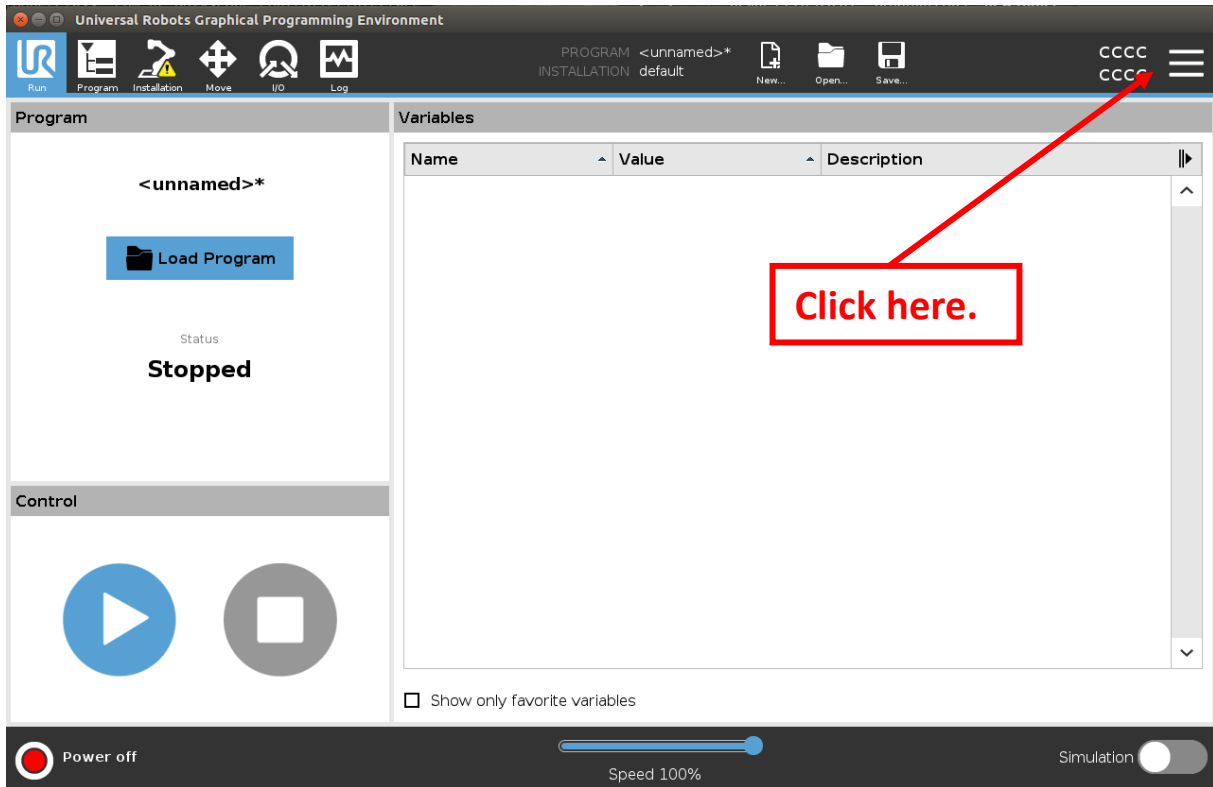
\* 24V must be present for the CLAMPBOOSTER to work

# CLAMPBOOSTER

## UR CAP Quickstart manual

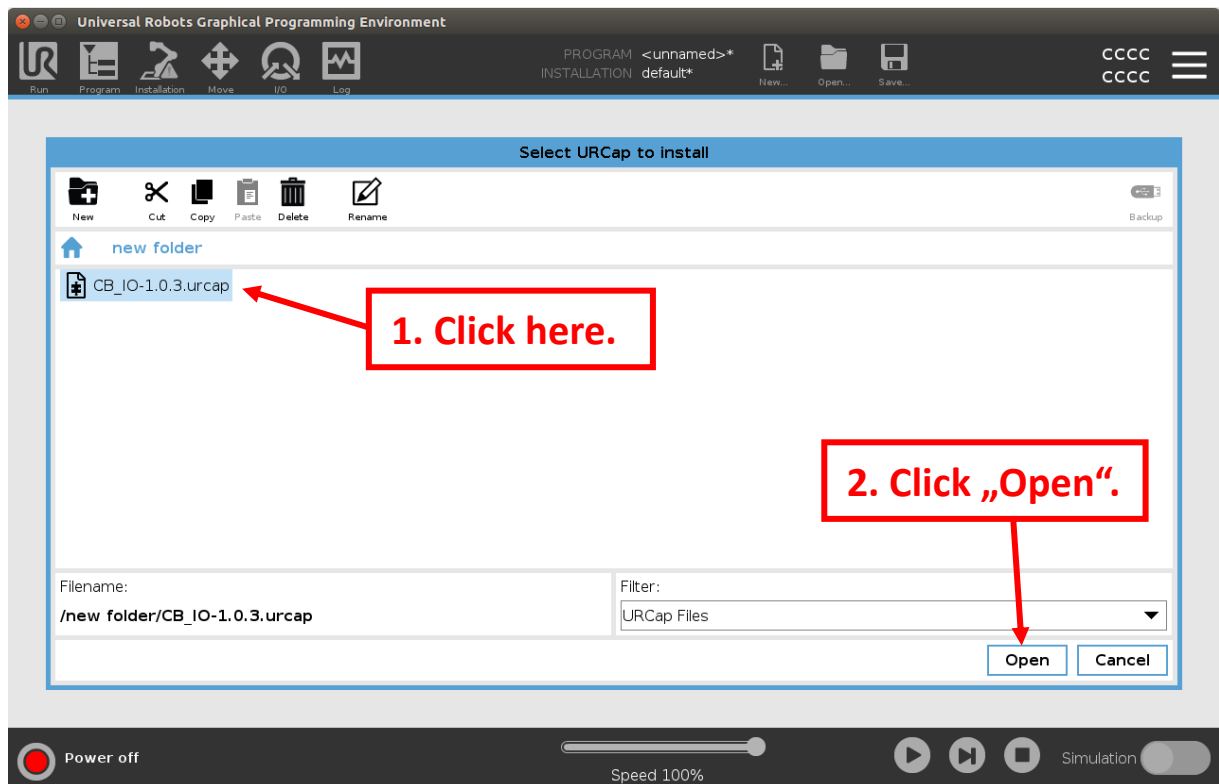
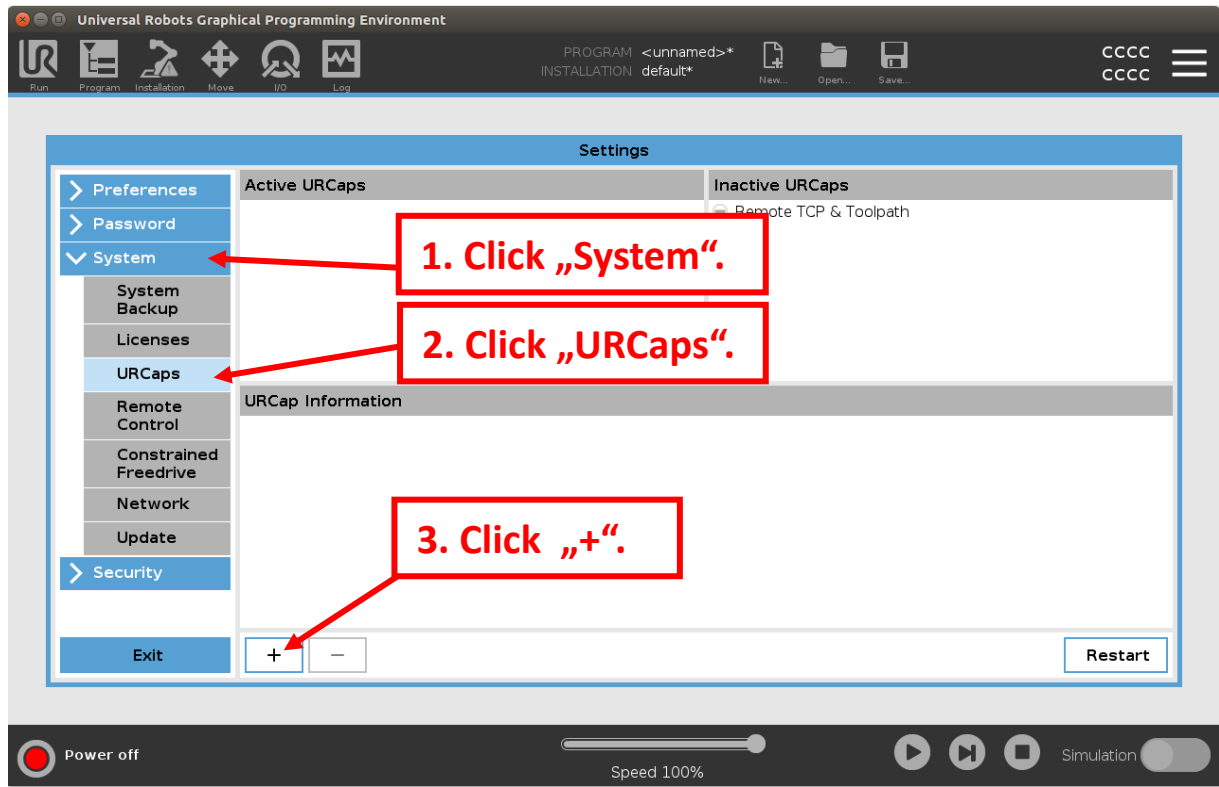
### Step 2: Installation of UR CAP

**Insert USB-Stick.**



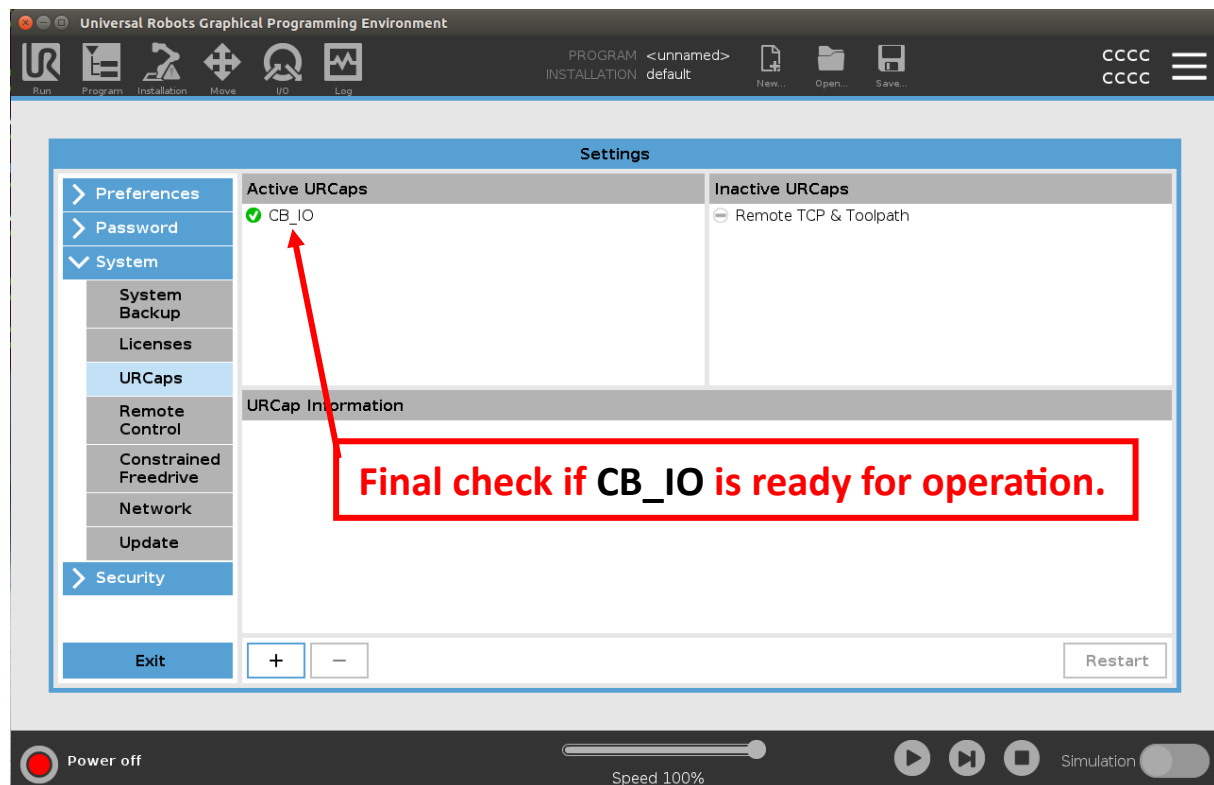
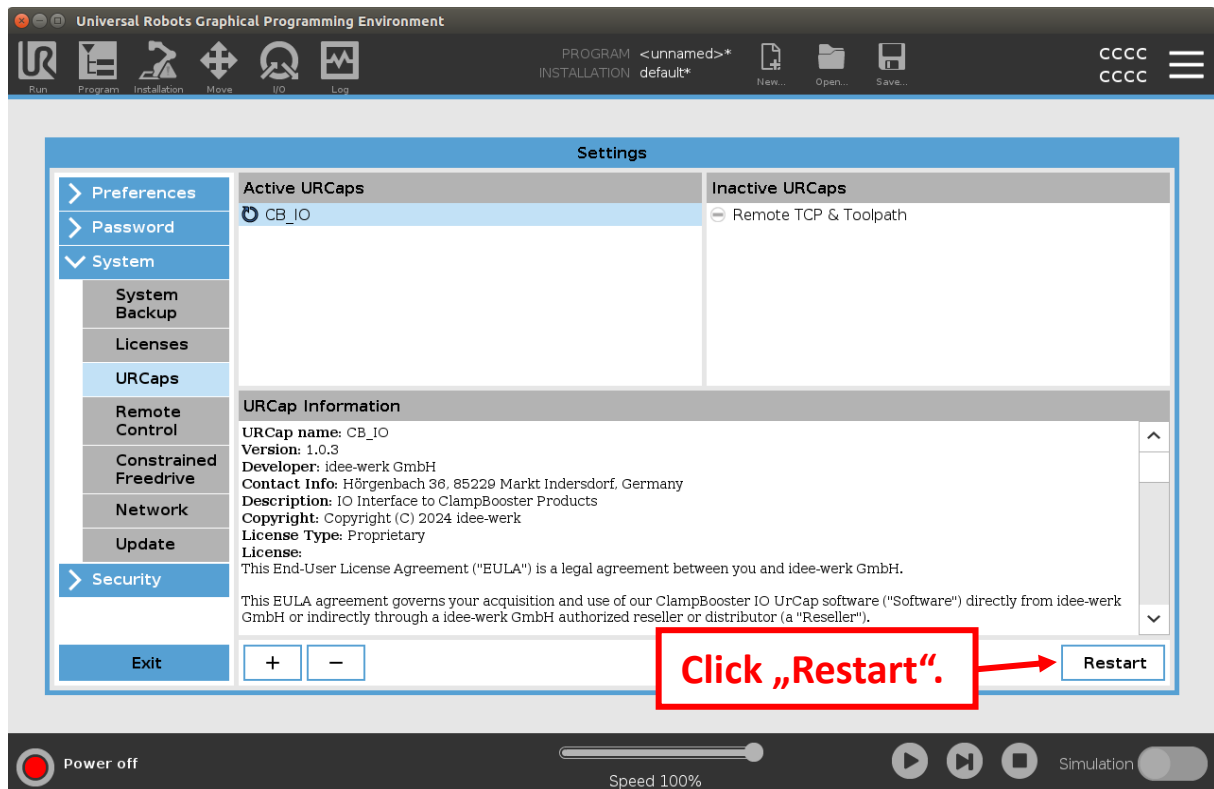
# CLAMPBOOSTER

## UR CAP Quickstart manual



# CLAMPBOOSTER

## UR CAP Quickstart manual



**Congratulations! The installation of UR Cap is now complete.**

# CLAMPBOOSTER

## UR CAP Quickstart manual

### Step 3: Configuration Settings

Universal Robots Graphical Programming Environment

PROGRAM <unnamed>\*  
INSTALLATION default

Run Program Installation Move I/O Log

CCCC  
CCCC

General  
Safety  
Features  
Fieldbus  
URCaps

ClampBooster

Select the digital pins used for the ClampBooster ready and blow-off valve control. Connection of the ready signal is mandatory for correct operation.  
Warning: Double-check that no conflicting pin assignments are present!

Ready digital input pin: digital\_in[0]

Blow-off valve digital output pin: digital\_in[0]

Select whether torque and / or opening angle setting uses analog port 0, open port 1.  
Warning: ClampBooster analog in port setting to voltage mode.  
Use torque analog port:   
Use opening angle analog port:

be settable by the robot. Torque  
g port 1.  
A current loop ports. DO NOT change the

**Read the description and act accordingly.**

Power off Speed 100% Simulation

Universal Robots Graphical Programming Environment

PROGRAM <unnamed>\*  
INSTALLATION default

Run Program Installation Move I/O Log

CCCC  
CCCC

General  
Safety  
Features  
Fieldbus  
URCaps

ClampBooster

Select the digital pins used for the ClampBooster ready and blow-off valve control. Connection of the ready signal is mandatory for correct operation.  
Warning: Double-check that no conflicting pin assignments are present!

Ready digital input pin: digital\_in[0]

Blow-off valve digital output pin: digital\_out[0]

Select whether torque and / or opening angle setting uses analog port 0, open port 1.  
Warning: ClampBooster analog in port setting to voltage mode.  
Use torque analog port:   
Use opening angle analog port:

be settable by the robot. Torque  
g port 1.  
A current loop ports. DO NOT change the

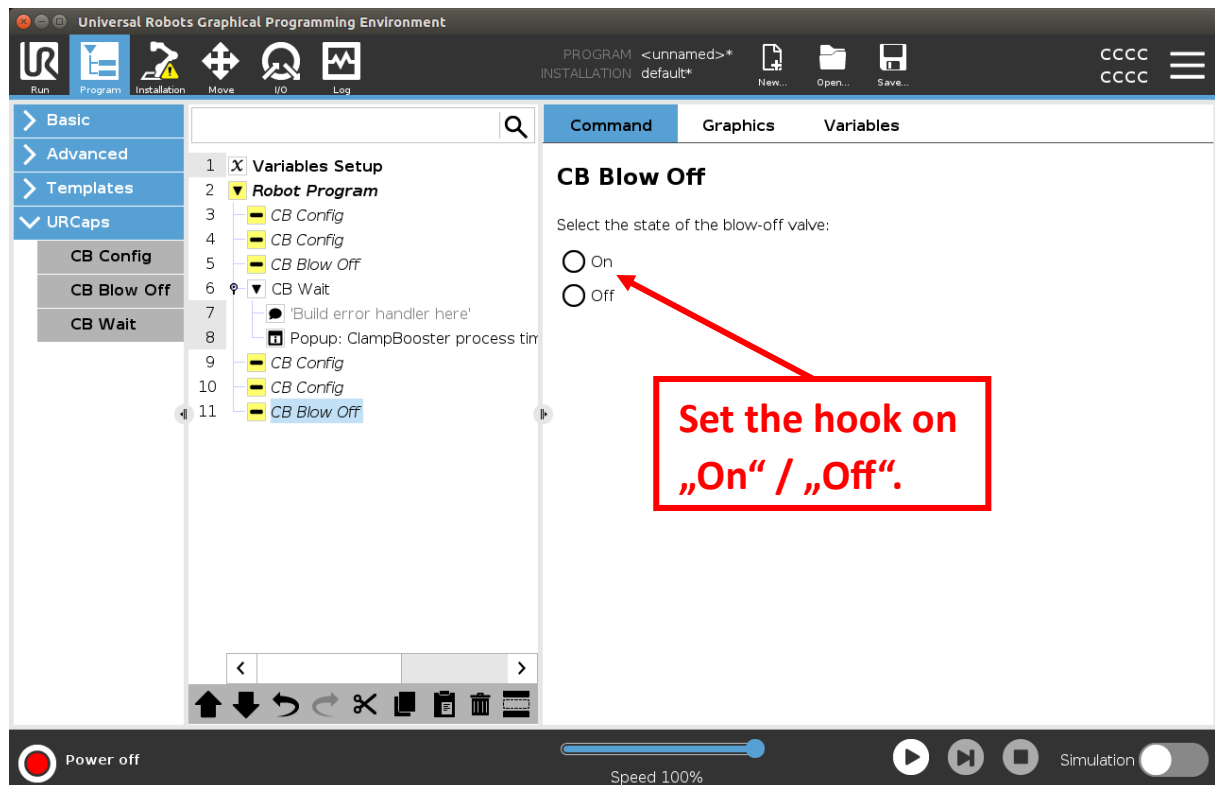
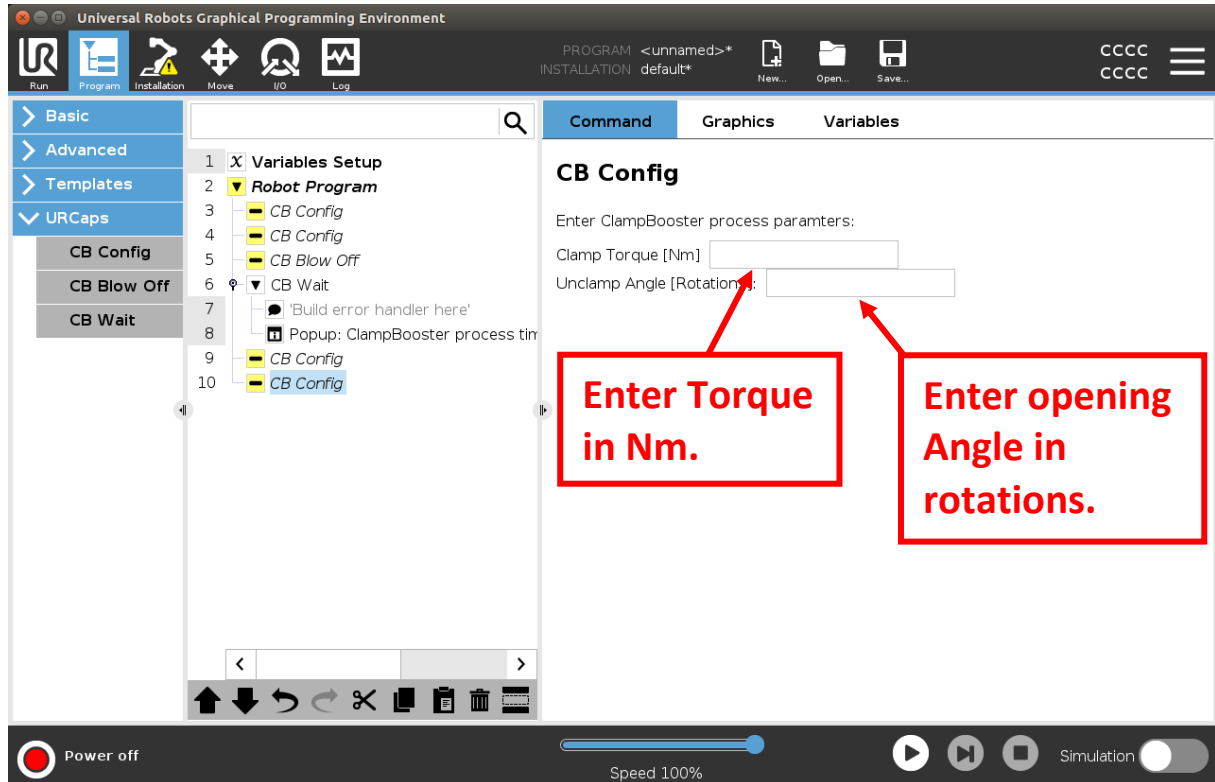
**Read the description and act accordingly.**

Power off Speed 100% Simulation

# CLAMPBOOSTER

## UR CAP Quickstart manual

### Step 4: CLAMPBOOSTER node configuration



# CLAMPBOOSTER

## UR CAP Quickstart manual

